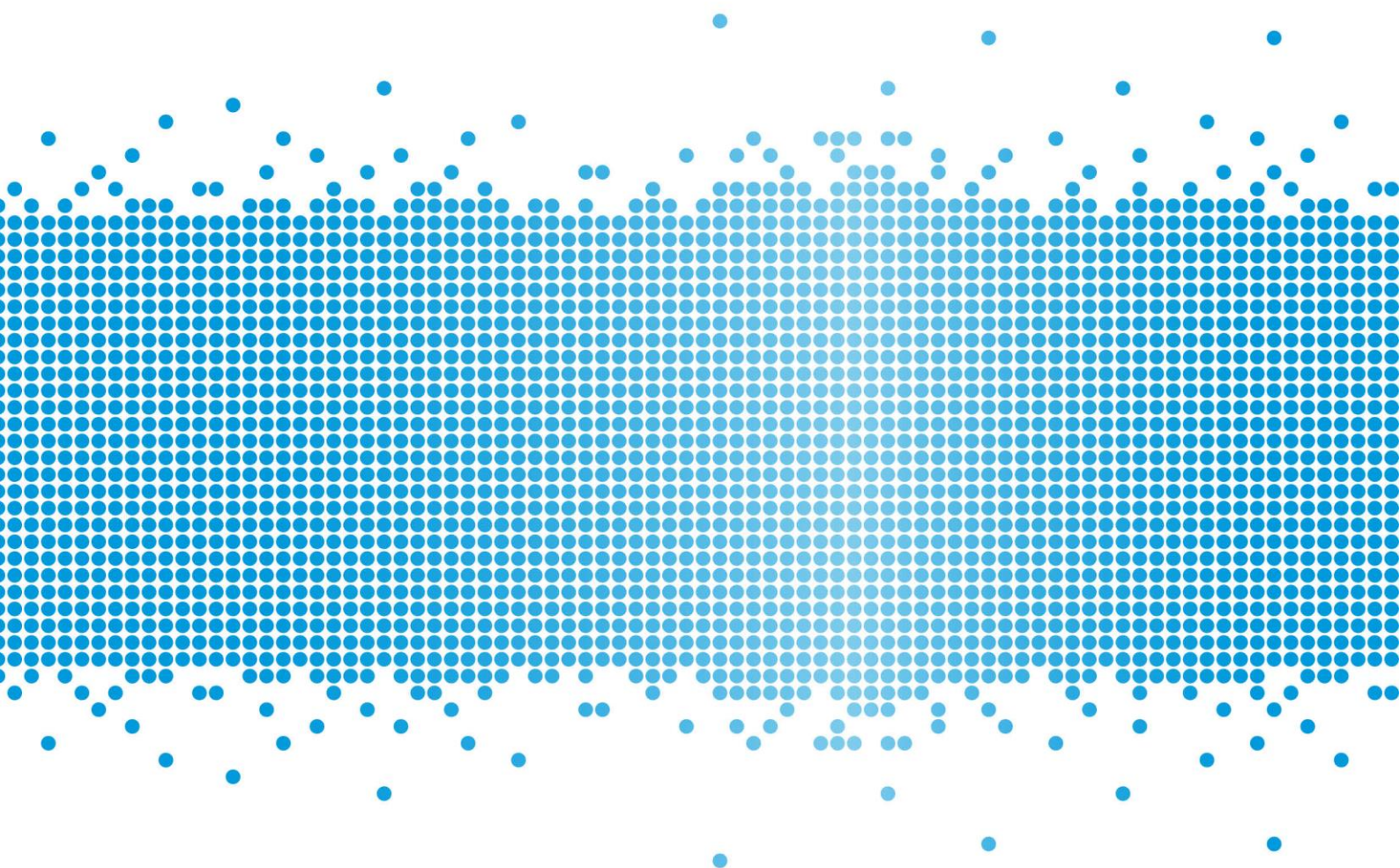


Financial Services and Credit Guide

COMPASS FINANCIAL MANAGEMENT

Version: 9

Date prepared: Tuesday, 30 June 2020



Kellie Seymour JP Adv DFP
COMPASS financial management
ABN 43-235-905-061

158 Gordon Street (PO Box 272)
PORT MACQUARIE NSW 2444

P: 02 6583 2211
F: 02 6583 2303
E: admin@compassadvice.com.au
W: www.compassadvice.com.au



This Financial Services and Credit Guide (FSCG) contains information that will help you decide whether to use the financial services we offer. It sets out:

- who we are and how we can be contacted
- the advice and services we provide
- information about our licensee Charter Financial Planning Limited (Charter)
- our fees and how we, your adviser and Charter, are paid in connection with those services
- how we manage your private information
- how you can complain about a matter relating to us or Charter

Documents you may receive

We will provide you with a number of documents as you progress through our financial planning process to capture each stage of your advice journey. We may provide these documents to you electronically to your nominated email address, unless otherwise agreed.

When we provide personal advice it will normally be documented and provided to you in a Statement of Advice (SOA), known as a financial plan. The financial plan contains a summary of your goals and the strategies and any financial products we may recommend to achieve your goals. It also provides you with detailed information about product costs and the fees and other benefits we and others will receive, as a result of the advice we have provided.

If we provide further personal advice a financial plan may not be required. We will keep a record of any further personal advice we provide you for seven years. You may request a copy of such records by contacting our office during that period.

When we provide credit advice we will conduct a preliminary assessment to determine the suitability of a particular product. This is normally documented and provided to you in a Record of debt advice or a Credit Proposal. We will retain a record of the debt advice or Credit Proposal which you may request by contacting our office within seven years of the assessment. We will only provide recommendations to apply for a particular credit contract with a certain lender or increase the credit limit of a particular credit contract where the contract meets your needs and objectives and is not unsuitable to your circumstances.

If we recommend or arrange a financial product for you we will provide a product disclosure statement (PDS) or investor directed portfolio service (IDPS) guide where relevant. These documents contain the key features of the recommended product, such as its benefits and risks as well as the costs you will pay the product provider to professionally manage that product.

You should read any warnings contained in your advice document, the PDS or IDPS guide carefully before making any decision relating to a financial strategy or product.

About our practice

COMPASS financial management is one of a select number of advice providers that has been awarded "Certified Quality Advice Practice" status by Charter. This program sets an industry benchmark for providing high-quality financial advice. The certification is awarded based on industry qualifications, demonstrated best practice business operations and proven success in meeting the financial needs of our clients.

Summary of the business

Name	COMPASS financial management
Australian Business Number	43 235 905 061
Our office contact details	
Address	158 Gordon Street, (PO Box 272), PORT MACQUARIE, NSW 2444
Phone	02 6583 2211
Fax	02 6583 2303
Email	admin@compassadvice.com.au
Website	www.compassadvice.com.au

This guide provides information about our advisers including their contact details, qualifications, experience, the services they may offer and financial products they can provide advice on.

Our advice and services

We can provide you with personal and general advice about specific services and financial products listed below.

Individual advisers within our practice may not be qualified to provide advice in all of the services and products noted below. Their individual profile guides will note any limitations to the advice they are qualified to provide. At all times we will ensure the appropriate adviser is available to you to provide advice consistent with your goals.

The following table sets out the areas of advice Kellie can help you with as well as the products and services Kellie can arrange. Kellie is able to provide advice and services in relation to your superannuation and investments up to a maximum value only. Should you require advice and services that extend beyond the scope of our services, we can refer you to a suitably qualified financial adviser.

Any additional advice or services we can offer you, or limitations to the list below, will be outlined in **Our Financial Advisers and Credit Advisers**.

I can provide advice on	I can arrange the following products and services
<ul style="list-style-type: none">— Investments strategies (strategic asset allocation)— Budget and cash flow management— Debt management (including borrowing for personal purposes)— Salary packaging— Superannuation strategies and retirement planning— Personal insurance— Estate planning— Centrelink and other government benefits	<ul style="list-style-type: none">— Superannuation, including retirement savings accounts— Managed investments— Investor directed portfolio services— Deposit and payment products (for example term deposits, cash management accounts and non-cash payment products)— Retirement income streams, including pensions and annuities— Personal and group Insurance (life cover, disability, income protection and trauma)— Life investment products including whole of life, endowment and bonds— Listed Securities (Model Portfolios)— Arranging for listed securities, shares and debentures to be bought and sold via a platform and broker.— Exchange traded funds and Listed investment companies— Various structured products, instalment warrants over managed funds and protected equity loans— Limited selection of investment guarantees

Charter maintains an approved products and services list, which includes products issued by AMP companies and a diversified selection of approved Australian and International fund managers. These have been researched by external research houses as well as our in-house research team.

Charter periodically reviews these products to ensure that they remain competitive with similar products that address similar client needs and objectives. Generally, we recommend products that are on the approved products and services list. However, if appropriate for your needs, we may, subject to Charter's approval, recommend other products.

A copy of the approved products and services list can be supplied to you upon request.

If we recommend a new platform or portfolio administration service, we use those approved by Charter.

As at June 2020, the lenders whose products are most commonly recommended by accredited mortgage consultants authorised by Charter are CBA, ANZ, Bankwest, AFG Home Loans, ING and NAB.

Tax implications of our advice

Under the Tax Agent Services Act 2009, COMPASS financial management is authorised by the Tax Practitioners Board to provide tax (financial) advice services on matters that are directly related to the nature of the financial planning advice provided to you. We will not consider any other tax matters in our advice to you. Where tax implications are discussed they are incidental to our recommendations and only included as an illustration to help you decide whether to implement our advice.

Transaction services

We can arrange to complete transactions for you on limited financial types of financial products where we can take your instructions and arrange for the transaction to be completed, without providing personal advice. If you wish to proceed without our advice, we will ask you to confirm your instructions, which will be documented in writing. We will keep a record of this documentation for seven years. You may request a copy of such records by contacting our office during that period.

Your relationship with us and using our services

You can contact us directly with any instructions relating to your financial products. This includes giving us instructions by telephone, mail or email. We can only accept your instructions via email once you have signed an authority form.

We will work with you to agree what advice and services we will provide and when and how often we will provide them.

Where you agree to annual advice and services, the details will be documented and provided to you in an advice or service agreement. This includes the frequency of contact between us, service standards that may apply, any fee arrangements and how the agreement can be terminated.

If at any time you wish to terminate your relationship with us, please contact us using the details shown in this guide.

Providing information to us

It is important that we understand your circumstances and goals, so that we can provide you with appropriate advice and services. You have the right not to provide us with any personal information. Should you choose to withhold information, or if information you provide is incomplete or inaccurate the advice or services we provide you may not be appropriate for you.

It is also important that you keep us up to date by informing us of any changes to your circumstances so we are able to determine if our advice continues to be appropriate.

Our fees

The actual fee charged to you will depend on the nature of the advice or service we provide. We will discuss and agree the actual fees with you before we proceed. The following section outlines the types of fees that may apply.

The fees charged for our advice and services may be based on a combination of:

- A set dollar amount; or
- A percentage based fee.

Our agreed advice and service fees may include charges for:

- Initial advice; and
- Ongoing or annual advice and services.

Please note that for services in relation to insurance, banking deposit products, some loan products and older investment products, commissions may be paid by the product provider as follows:

- Initial commission - a percentage of the value of your investment contributions; and
- Ongoing commission - a percentage of the value of your investment balance, usually calculated at the end of each month in which you hold the investment.

Payment methods

We offer you the following payment options for payment of our advice fees:

- BPAY, direct debit (savings), credit card or cheque; and
- Deduction from your investment.

All fees and commissions will be paid directly to Charter as the licensee. They retain an amount (a licensee fee) to cover their licensee costs and the balance is passed on to us. The amount is determined annually, based on a number of factors, including our business revenue and the number of advisers in the practice.

For details of our service fees, please refer to **Schedule of fees** below.

Schedule of fees

These prices should be used as a guide only. We will discuss your individual needs and agree our fees with you. The actual agreed fees will depend on factors such as the complexity of your circumstances and goals and the scope of the advice.

Initial service fees

These are fees paid when you have agreed to receive our advice:

Initial service	Fee amount
Initial Advice	Initial advice fees range between \$330 and \$5,000 for a single strategy and \$1,650 and \$20,000 for multiple strategies.
Advice Implementation	Implementation fees range between \$330 and \$5,000 for single advice strategies and \$1,650 and \$20,000 for multiple and complex advice strategies

If, in developing your financial plan, I identify that you have a complex situation that requires extensive planning and development, my initial advice fee will change. In this case, I will provide you with an upfront quote of the amount payable before I proceed with developing your financial plan.

The initial advice fee covers the cost of researching and preparing your financial plan.

Before providing you with initial advice I will prepare an initial advice agreement.

The initial advice agreement sets out what my initial advice will cover and how much it will cost.

Advice Implementation, covers the administrative time spent implementing the recommended strategies and products.

Ongoing service fees

We provide ongoing services for clients with existing ongoing fee arrangements to help you stay on track to meet your goals. Our ongoing service fees vary depending on the scope and complexity of services provided. The cost of these services are as follows:

Ongoing service	Fee amount
Ongoing Service fee	Fees may be up to 2.0% of your investment balance per annum or a set dollar amount. For example, if your account balance was \$100,000, your fee would be \$2,000

The amount of fees will depend on the service offering and these are provided in a separate advice or services agreement. Note that ongoing service are closed to new clients and are applied to existing 'ongoing advice agreements' prior to 1 March 2020.

Additional advice

When providing additional advice we may charge the following:

Additional advice	Fee amount
Additional advice fee	For additional advice, an hourly rate of \$385 (incl GST) is payable

Annual advice and service fees

We also offer services for the below costs for a fixed period of 12 months. The cost of those services are as follows:

Service	Fee amount
Annual fix terms service	Fees may be between 1% pa to 2% pa of funds under management for a 12 month period eg if your funds under management was \$100,000, assuming the balance remains constant, your fee for 12 months would range between \$1,000 to \$2,000

The amount of fees will depend on the service offering and these will be provided in a separate advice or services agreement.

Commissions

We do not receive commissions on investments through new superannuation, managed funds or retirement products. However, some products, particularly older products, may attract commissions.

Any commission amounts will be disclosed to you when providing my advice. The following table is a guide of commissions we may receive.

Product type	Initial commission	Ongoing commission	Example
Investments	Up to 4.95% of all contributions made to the investment.	Up to 2.00% of the investment value each year.	If you made an investment of \$10,000, we would receive up to \$495.00 initially and \$200.00 pa.
Insurance (including those held within superannuation)	<p>Up to 66% of the first year's premium for new policies implemented from 1 January 2020.</p> <p>We may receive up to 77% of the first year's premium for new policies implemented between 1 January 2019 and 31 December 2019.</p> <p>We may receive commissions on increases or additions to existing policies of up to 130%.</p>	Up to 33% of the insurance premium each following year.	<p>On insurance policies implemented from 1 January 2020, if your insurance premium was \$1,000, we would receive an initial commission of up to \$660.</p> <p>We would receive an ongoing commission of up to \$330.00 pa.</p>

All fees and charges include GST.

If an agreed advice fee is charged then we may rebate all or some of the commission.

Other costs

Where other costs are incurred in the process of providing our advice and services to you, you will be liable for these costs. However, we will agree all additional costs with you prior to incurring them.

Research into Industry Superannuation Funds

To ensure transparency regarding our fees it is important you are aware that when dealing with Industry Superannuation Funds as a product class, we find it requires further time to research, compile and assess the merits of such as a suitable investment on an ongoing basis. While we find Industry Funds are suitable in some cases, it costs us more in administration and research time to analyse, communicate and transact with them. As such we charge an additional fee of \$385 per Industry Superannuation Fund, per review, when providing ongoing advice. Generally this would be twice a year so when doing comparisons on the cost of monitoring and managing an Industry Superannuation Fund on your behalf, we allow an additional \$660 per year when comparing costs with Retail funds.

Other benefits we may receive

The following is a list of benefits we may receive other than those explained above. These are not additional costs to you. These benefits may be monetary or things like training, events or incentives we are eligible for.

In addition to the payments we may receive for my advice and services, we may receive other support services from the licensee. We may also be eligible to receive financial including financing, technology and training assistance, prizes and awards or events in recognition of financial planning excellence and innovation including if we qualify under the licensee's excellence program, and business performance or for business operational costs. These benefits are paid either at the licensee's discretion or depending on meeting certain qualifying criteria including the quality of my services, business goals and ranking against other practices in Charter. The amounts are set by the licensee from time to time (usually on an annual basis).

We may also participate in business lunches or receive corporate promotional merchandise tickets to sporting or cultural events and other similar items.

From time to time our practice participates in pro bono work and we may be eligible for a subsidy from the licensee of up to \$3,800 per client inclusive of GST.

Development, management and advice (DMA) run off payments

Eligibility to receive DMA run off payments is dependent on us continuing to be authorised by and meeting standards set by Charter. From 31 January 2020 we will be eligible to receive run-off payments based on the amount of advice revenue we generated in 2018. Advice revenue includes revenue directly attributable to advice provided to a client for an agreed fee. It excludes commissions from investment, insurance and banking products. These payments are to assist with our cashflow over 3 years as set out in the table below. Run-off payments will not be made after December 2022.

Year	Total annual amount (payable over 2 instalments)
2020	\$29,700.00
2021	\$19,800.00
2022	\$9,900.00

Transition support payments (TSP)

The TSP payments we are to receive provide us with transitional cash flow support as we are no longer eligible to receive value participation scheme (VPS) payments. The TSP amounts are derived from a crystallised base that was unique for our practice.

Year	Annual TSP amount
2020	\$24,260.40
2021	\$32,347.20
2022	\$16,173.60

Certified quality advice program

On meeting eligibility criteria and gaining access into the program, we may become eligible for discounts on licensee fees, a 10% increase in purchase price under the buyout option and a 10% increase in DMA payment should we qualify. Eligibility is assessed on professional operations and processes, high quality advice standards and education.

Buyout option

If we leave the financial services industry, we are eligible to sell the register rights of our client base to Charter. The valuation of these rights is based on a multiple of the annual financial planning revenue generated by our practice.

Personal and professional development

Charter provides personal and professional development opportunities in the form of education and professional development programs, offered annually to qualifying practices.

Charter Leaders program

Each year, practices that meet particular criteria may be awarded entry into the Charter Leaders program. The criteria is based on a combination of factors including the quality of services, business goals and rankings against other practices in Charter. The Charter Leaders program provides access to personal and professional development courses organised by Charter. Charter may subsidise the cost of these courses up to amounts as determined by Charter from time to time.

Business support

We might receive financial and non-financial assistance from the licensee including financing or subsidies or reimbursements for accounting, legal and bank fees or technology support; marketing, badging rights, or other once-off transitional support costs, to help us grow our business or implement appropriate succession planning options.

Provided we meet specific qualification Charter will support the practice with up to \$3,750 per authorised representative to meet the training and education requirements for financial advisers as required by Financial Adviser Standards and Ethics Authority. Any support provided by Charter is paid directly to the education provider and not to us.

Para-planning costs subsidy

We may be eligible for a subsidy from AMP in relation to paraplanning costs, depending on the number of paraplanning requests that we make in a particular month. If our practice submits a minimum of 5 paraplanning requests per eligible authorised representative in our practice, we receive a discount of up to 25% in relation to these costs. For example, if the total cost of 5 SOAs is \$1,000 we will receive a discount of up to \$250 ($25\% \times \$1,000 = \250) and pay a discounted fee of minimum \$750.

Placement fees

From time to time Charter will receive fees from brokers or product issuers (including AMP group companies) for arranging client participation in Initial Public Offerings (IPOs) of financial products. The fee, which is generally a percentage of the fee paid to the broker, varies from offer to offer and by the level of participation by Charter. We may share in this fee based on the level of participation by our clients.

Relationships and associations

It is important that you are aware of the relationships that Charter has with providers of financial services and products as they could be seen to influence the advice you receive.

About our licensee

Charter Financial Planning Limited

ABN 35 002 976 294

Australian Financial Services Licensee and Australian Credit Licensee No: 234665

Charter Financial Planning Limited has:

- Approved the distribution of this guide
- Authorised us to provide advice and other services as described in this guide
- Authorised us to provide credit assistance services to you

Charter's registered office is located at 33 Alfred Street, Sydney, NSW 2000.

About the AMP Group

Charter is a member of the AMP group of companies. We can provide advice on products from a wide range of financial product providers, some of which are part of the AMP Group and as such Charter is affiliated with:

- | | |
|--|---|
| — National Mutual Funds Management Limited | — AMP Capital Funds Management Limited |
| — NMMT Limited | — AMP Capital Investors Limited |
| — N.M. Superannuation Pty Limited | — AMP Superannuation Limited |
| — Multiport Pty Limited | — AMP Life Limited* |
| — ipac asset management limited | — Cavendish Superannuation Pty Ltd |
| — AMP Bank Limited | — Australian Securities Administration Limited (ASAL) |
| — SMSF Administration Solutions Pty Ltd | — SuperConcepts Pty Ltd |

* On completion of the sale of AMP's Australian and New Zealand wealth protection and mature businesses to Resolution Life, which is expected to occur on or around 30 June 2020, AMP Life Limited will cease to be a related body or associate of the Licensee.

If we recommend a product issued by the AMP Group or a third party product issuer, they will benefit from our recommendation by receiving product, administration and investment fees, as well as fees paid by fund managers to distribute their product. These fees are all disclosed in the relevant PDS or IDPS guide.

Authorised representatives and/or staff employed in our business may hold shares in AMP Limited, whose share price may be favourably affected by the sale of products issued by AMP Group companies.

Confidence in the quality of our advice

If at any time you feel like you are not satisfied with our services, the following will help you understand your options and find a resolution.

- Contact your adviser and tell them about your complaint.
- If your complaint is not satisfactorily resolved within three business days, please contact AMP Advice Complaints:
 - Phone 1800 812 388
 - Email advicecomplaints@amp.com.au
 - In writing:
Attention: National Manager, Advice Complaints
33 Alfred Street
Sydney NSW 2000
- They will try to resolve your complaint quickly and fairly. They will provide you with a decision in respect to your complaint within 90 days of us receiving it.
- We note that in some circumstances, it may not be possible for us to completely resolve a complaint within the 90 days. If you do not agree with our decision in respect of your complaint, or are otherwise unsatisfied with our response after the 90 day period, you may escalate your complaint to one of the following External Dispute Resolution Schemes listed below.

Any issues relating to financial advice, investments, superannuation, insurance matters, or credit matters	Australian Financial Complaints Authority (AFCA) GPO Box 3 Melbourne VIC 3001 1800 931 678 www.afca.org.au info@afca.org.au
Any issue relating to your personal information	The Privacy Commissioner GPO Box 5218 Sydney NSW 2001 1300 363 992 privacy@privacy.gov.au

You may also contact the **Australian Securities & Investments Commission (ASIC)** on 1300 300 630 (free call info line) to make a complaint and obtain information about your rights.

Professional indemnity insurance

We maintain professional indemnity insurance to cover our advice and the recommendations provided by your adviser. Charter is also covered by professional indemnity insurance and this satisfies the requirements imposed by the Corporations Act 2001 and National Consumer Credit Protection Act. The insurance covers claims arising from the actions of former employees or representatives of Charter, even where subsequent to these actions they have ceased to be employed by or act for Charter.

Your privacy

We are committed to protecting your privacy. Below we outline how we maintain the privacy of the information we collect about you.

Privacy collection statement

As part of the financial planning process, we need to collect information about you. Where possible we will obtain that information directly from you, but if authorised by you we may also obtain it from other sources such as your employer or accountant. If that information is incomplete or inaccurate, this could affect our ability to fully or properly analyse your needs, objectives and financial situation, so our recommendations may not be completely appropriate or suitable for you.

We are also required under the Anti-Money-Laundering and Counter-Terrorism Financing Act (AML/CTF) 2006 to implement client identification processes. We will need you to present identification documents such as passports and driver's licences in order to meet our obligations.

We keep your personal information confidential, and only use it in accordance with our Privacy Policy. Some of the ways we may use this information are set out below:

- Your adviser and Charter may have access to this information when providing financial advice or services to you;
- Your adviser may, in the future, disclose information to other financial advisers, brokers and those who are authorised by Charter to review customers' needs and circumstances from time to time, including other companies within the AMP group (the Group);
- Your information may be disclosed to external service suppliers both here and overseas who supply administrative, financial or other services to assist your adviser and the Group in providing financial advice and services to you. A list of countries where these service providers are located can be found in the Group Privacy Policy;
- Your information may be used to provide ongoing information about opportunities that may be useful or relevant to your financial needs through direct marketing (subject to your ability to opt-out as set out in the Group Privacy Policy);
- Your information may be disclosed as required or authorised by law and to anyone authorised by you.

Your adviser and Charter will continue to take reasonable steps to protect your information from misuse, loss, unauthorised access, modification or improper disclosure. You can request access to the information your adviser or Charter holds about you at any time to correct or update it as set out in the Group Privacy Policy. The Group Privacy Policy also contains information about how to make a complaint about a breach of the Australian Privacy Principles.

For a copy of the Group's Privacy Policy visit <http://www.amp.com.au/privacy> or you can contact us.

Australian Finance Group (AFG)

AFG is an aggregator and it acts as a gateway or interface between mortgage brokers and lenders by providing an IT platform through which brokers submit loan applications and deal with lenders as well as providing some other ancillary services.

Lenders may offer incentives that are paid directly to the accredited mortgage consultant. These may include indirect benefits for example business lunches, tickets to sporting or cultural events, corporate promotional merchandise and other minor benefits.

Accredited mortgage consultants may be invited to attend the AFG National Conference. This is an annual event which offers accredited mortgage consultants the opportunity for professional development and to hear industry updates and educational presentations by AFG and lender sponsors. AFG may subsidise some costs of attendance. The value will depend upon a range of factors, including the nature of the courses and events planned.

Any benefits that we may receive that are related to a loan recommended to you which is regulated by the National Consumer Credit Protection Act, will be disclosed in our advice to you prior to application.

Our Financial Advisers and Credit Advisers

About Kellie Seymour

Experience	24 Years in the Financial Services Industry giving advice in Investments, Insurance and Superannuation
Phone	02 6583 2211
Email	admin@compassadvice.com.au
Authorised representative number	242467
Credit representative number	M0018047

Qualifications (Finance related)

Advanced Diploma of Financial Planning

Diploma of Financial Planning

Qualifications (Non-finance related)

Justice of the Peace

The advice and services I can provide

I am authorised to provide advice and services in relation to your superannuation and investments up to a maximum of total funds under advice of \$600,000 per client, where a client is an individual or a couple and investment advice as listed in the **Our advice and services** section of this guide.

Should you require advice and services that extend beyond my authority I can refer you to a suitably qualified adviser.

I am also a Credit Representative of Charter and am authorised to provide credit advice regarding how to structure debt, suitability of existing loan structures and repayment options. If you require advice involving mortgages or other lending products, I can refer you to an Accredited Mortgage Consultant.

How I am paid

I receive the following from our practice:

— salary

I am paid a salary from COMPASS financial management and may also receive bonuses and other benefits when certain criteria such as achieving sales targets are met.